



Naperville Little League Baseball

[www.NLLB.org](http://www.NLLB.org)

# 2018 MANGER MEETING

**DRAFTED LEAGUES**



# **YOUR 2018 BOARD CONTACTS**

**CONTACT INFO ON THE  
NLL WEBSITE**

- **PRESIDENT:** LARRY LUCAS 630-347-7513
- **VICE PRESIDENT:** MIKE CZUBA 630-200-3512
- **CONTINENTAL LEAGUE DIRECTOR:** MIKE LLEWELYN 630-327-1419
- **REPUBLIC LEAGUE DIRECTOR:** JEFF DORJATH 630-215-7468
- **NATIONAL LEAGUE DIRECTOR:** RAY SHINKLE 773-960-8781
- **OPERATIONS MANAGER:** LISA O'REAR 630-841-9192



# WE HAVE NEW LEAGUE TITLES

Old 2017 league titles	NEW 2018 league titles
Majors	Majors AA
AAA	Majors A
Supreme	Supreme AA
AA	Supreme A
A (8U)	Rookies AA
A (7U)	Rookies A

# 2018 COACHES

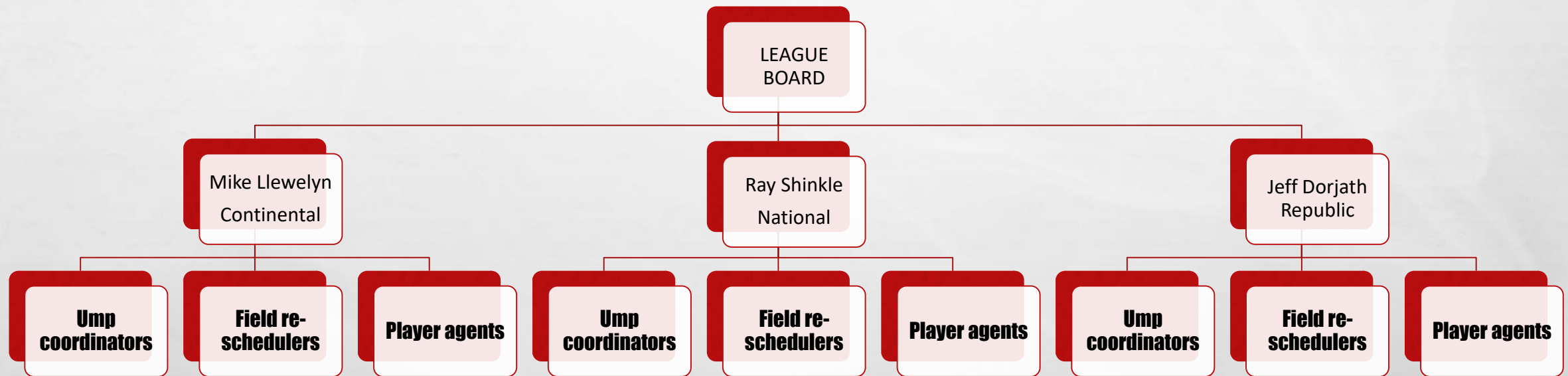
## YOU ARE THE FACE OF THE LEAGUE

- 14 MAJORS AA LEAGUE COACHES
- 12 SUPREME AA LEAGUE COACHES
- THANK YOU FOR EVERYTHING YOU DO. WE ARE HERE TO HELP AND GET YOU WHAT YOU NEED TO BE SUCCESSFUL.
- LET US KNOW WHAT YOU THOUGHT OF THE OFF-SEASON TRAINING BUDGETS THIS YEAR.
- MIGS. YOU ON THE LIST? ALL OF YOUR ASSISTANTS ON THE LIST? WHY DO WE INSIST ON THIS?



# STRUCTURE OF THE LEAGUE

## THE PEOPLE WHO HELP THE LEAGUE DIRECTORS RUN THE LEAGUES





# FIELD RE-SCHEDULERS

## HANDOUT AND AVAILABLE ON WEBSITE

- IF CANCELLED BY NPD OR NLL, AN EMAIL BLAST FROM WEBSITE WILL NOTIFY EVERYONE.
- **DO NOT ASSUME YOUR GAME IS CANCELLED. IF THE LEAGUE OR THE NPD DOES NOT CANCEL, GO TO THE GAMES IN UNIFORM OR YOU WILL RISK A FORFEIT. WE WILL NOT RESCHEDULE A GAME BECAUSE YOU *THOUGHT* IT WOULD BE CANCELLED.**
- PER NPD - IF YOU HAVE TO USE MORE THAN 6 BAGS OF TURFACE, IT'S TOO WET AND YOU SHOULD CANCEL THE GAME.
- IF YOU AND THE OTHER MANAGER CANCEL DUE TO FIELD CONDITIONS, **CALL YOUR FIELD RE-SCHEDULERS. NOTHING WILL BE RESCHEDULED IF YOU DON'T** AND DON'T CALL YOUR LEAGUE DIRECTOR TO DO IT.
- THEY ARE TOLD TO RESCHEDULE TO THE NEXT AVAILABLE TIME. NO EXCEPTIONS!
- WE ARE ON A TIGHT SCHEDULE TO GET THESE GAMES IN BY THE JUNE 12<sup>TH</sup> PLAYOFFS, SO WE CAN'T TAKE REQUESTS.

# UMP COORDINATORS

**HANDOUT AND AVAILABLE ON WEBSITE**

- IF LEAGUE OR NPD DOES NOT CANCEL THE GAME, BUT YOU AND YOUR OTHER MANAGER AGREE THE FIELD IS NOT PLAYABLE, YOU MUST CALL THESE PEOPLE IF A GAME IS CANCELLED AND BEFORE YOU LEAVE THE FIELD SO THEY CAN CALL THE UMPS BEFORE THEY ARE DROPPED OFF.
- PLEASE CALL THE UMP COORDINATOR IF YOUR UMP IS LATE, NOT YOUR LEAGUE DIRECTOR.



# PLAYER AGENTS

EACH LEAGUE DIRECTOR HAS PLAYER AGENTS FOR EACH LEAGUE TO HANDLE CALL-UPS WHEN THEY ARE SHORT.

MAJORS AA & SUPREME AA MUST START AND FINISH WITH 9, OR YOU FORFEIT. YOU TAKE A RISK IF ONLY PLAYING WITH 9 OR WAIT TILL LAST MINUTE TO REQUEST A CALL-UP.

THEY WILL COMPILE A LIST OF KIDS WHO ARE GOOD ENOUGH AND INTERESTED IN "PLAYING UP":

MAJORS AA PULLS FROM MAJORS A & SUPREME A

MAJORS A PULLS FROM SUPREME AA & A.

SUPREME AA PULLS FROM SUPREME A.

SUPREME A PULLS FROM ROOKIES AA.

## **RULES FOR CALL-UPS:**

**THEY WEAR THEIR OWN UNIFORM.**

**THEY MUST BAT LAST.**

**THEY CANNOT PITCH OR CATCH.**





# GAME COORDINATORS

## WHY DO WE NEED THEM?

- MUST HAVE WHEN UMP IS UNDER 18 YEARS OLD. TOO YOUNG TO BE THROWN INTO ADULT SITUATION. HE NEEDS UNBIASED HELP.
- HOME TEAM MUST PROVIDE AND BE A MIGS.
- INTRODUCE THEM TO THE UMP BEFORE THE GAME STARTS IF UMP LOOKS CLOSE TO 18. THEY NEED TO KNOW WHO TO LOOK FOR WHEN FACED WITH A TOUGH DECISION.
- ASSIGN SOMEONE LEVEL HEADED AND ABLE TO TAKE CHARGE. CAN BE A MOM TOO.
- THEY MAKE THE CALLS FOR WEATHER AND EJECTING A COACH OR PARENT.



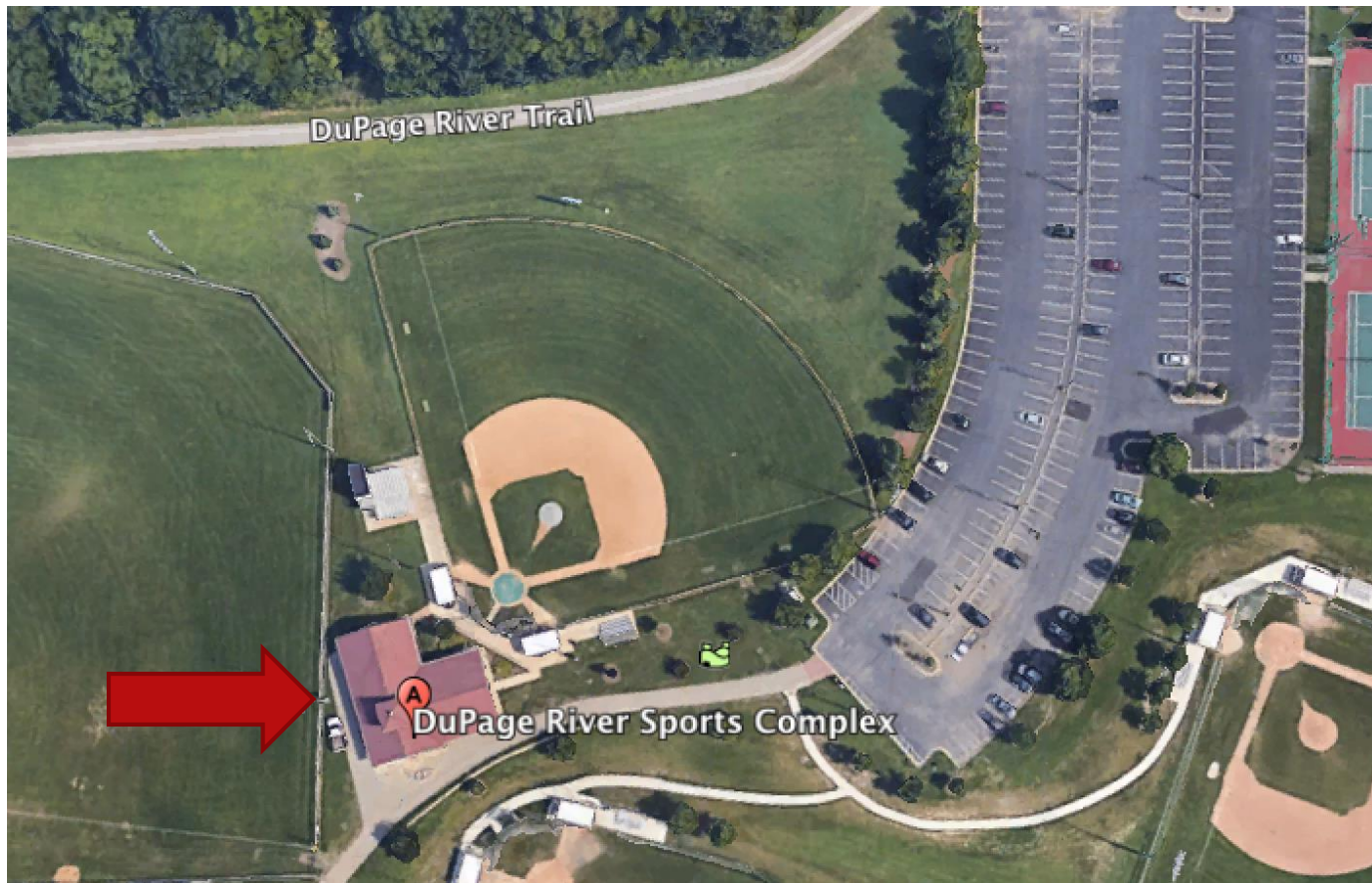
# MANAGERS MUST...

- 3 COACHES IN DUGOUT MAX DURING GAMES, THERE IS A REASON.
- HOME TEAM GETS 3B DUGOUT.
- VISITING TEAM PREPS FIELD, HOME TEAM BREAKS IT DOWN. WORK WITH EACH OTHER.
- PULL BASES AND INSERT BASE PLUGS. DON'T ASSUME THERE IS ANOTHER GAME.
- SHUT DOWN SCOREBOARD AND LOCK IT ALL UP. NPD CHECKS AND GETS VERY UPSET WHEN THIS IS NOT DONE.
- PLEASE - DON'T FORGET TO PUT THE KEY BACK IN LOCKBOX.
- BE COOL AND CLEANUP YOUR DUGOUT BEFORE LEAVING.
- GET A COUPLE OF PARENTS TO HANDLE SCORE BOARD AND ANNOUNCER. IT MAKES THE GAMES FUN.



# TAKE CARE OF THE FIELDS

- NAPERVILLE PARK DISTRICT OWNS THEM, BUT WE NEED YOUR HELP TO CARE FOR THE FIELDS AND THE STORAGE CLOSETS. THE MORE WE DO OURSELVES, THE BETTER THEY WILL BE.
- REPAIR THE MOUND AND BATTERS BOX AFTER GAMES. PULL UP THE CLAY TO REPAIR HOLES. DON'T JUST FILL IN WITH DRY DIRT. PUT PEOPLE IN CHARGE TO HELP YOU PREP AND BREAK DOWN THE FIELDS.
- IF YOU USE A FIELD FOR PRACTICE, REPAIR MOUNDS AND BATTERS BOX WHEN DONE.
- WE ARE NOT ONLY LEAGUE USING THESE FIELDS, SO SOMETIMES A TRAVEL TEAM IS TO BLAME.



**THE LOCKBOX CODE IS  
1245 FOR ALL OF THE  
FIELDS.**

**WHERE IS THE KEY AT  
DUPAGE 5?**

# INJURIES - DON'T RISK IT!

- DON'T RISK IT. IF A PLAYER IS HIT IN THE HEAD, TAKE HIM OUT AND CALL HIS PARENTS. YOU CAN INSERT HIM BACK IN LINEUP LATER IF FEELING BETTER. HE WILL JUST BE SKIPPED IN LINEUP AND WILL NOT BE AN OUT.
- HAVE ICE PACKS AND BAND AIDS IN YOUR COACHING BAG.
- LIGHTNING. GET WEATHER APPS AND NEVER RISK IT. IT'S NOT WORTH IT.
- NO PEANUTS IN DUGOUT. TOO RISKY FOR YOUR TEAM AND OTHER TEAMS.
- NO WARMUPS WITH BAT DURING THE GAME (NO ON-DECK CIRCLE)
- CATCHERS MUST WEAR CUPS AND PROPER GEAR.
- COACHES CANNOT WARM UP PITCHERS. GET SOMEONE READY WITH A MASK BETWEEN INNINGS.

# LOCAL RULES

- INNING CANNOT START WITHIN 10 MINUTES OF NEXT GAME AND NEVER PAST 10:00 PM.
- 2 MOUND VISITS PER INNING AND SECOND ONE YOU MUST PULL THE PITCHER. 3 MAX TO A PITCHER DURING THE GAME.
- SUPREME AA: CAN STEAL HOME AFTER FIRST 10 GAMES.
- SLAUGHTER RULE FOR 10 RUNS AFTER 3.5 INNINGS FOR HOME TEAM. YOU CAN KEEP PLAYING, BUT GAME REPORT IS FINAL. THOUGH NOT RECORDED, PITCH COUNT IS ACTIVE.
- PITCH COUNT. GET SOMEONE TO HANDLE IT FOR YOU AND CHECK WITH OTHER COACH EVERY HALF INNING.

# NEW LITTLE LEAGUE BATS

- ALL BATS MUST HAVE THIS STICKER.
- NO MORE RESTRICTION ON SIZE AS LONG AS IT HAS THE USA STICKER.
- CHECK BATS BEFORE GAME.
- PENALTY FOR USING AN ILLEGAL BAT:

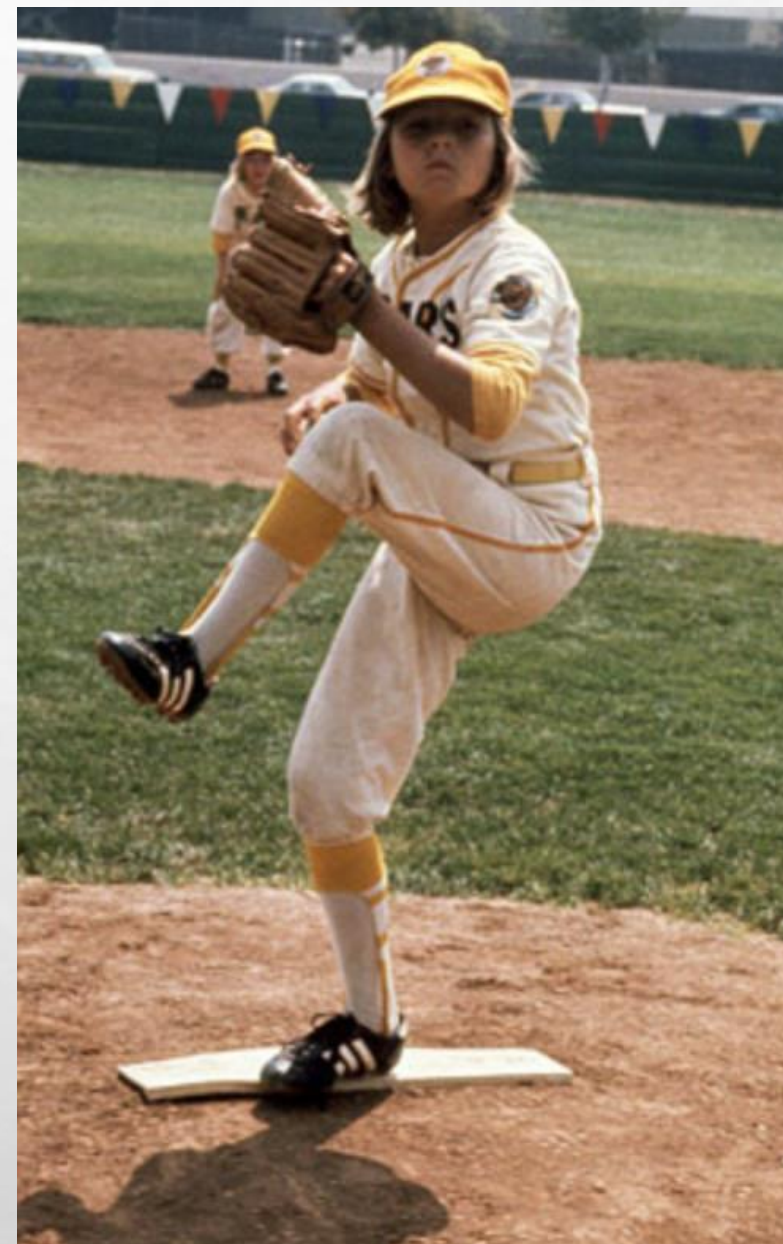
1<sup>ST</sup> OFFENSE: BALL IS DEAD, BATTER IS OUT, TEAM LOSES A BASE COACH.

2<sup>ND</sup> OFFENSE: BALL IS DEAD, BATTER IS OUT, MGR IS EJECTED.



# PITCH COUNT RULES (KNOW THEM)

- FULL DAY REST MEANS A FULL DAY OF REST.
- 20 PITCHES AND UNDER=0 DAYS REST.
- 21-35 PITCHES=1 DAY REST.
- 36-50 PITCHES=2 DAY REST
- 51-65 PITCHES=3 DAY REST
- 66-75 MAX SUPREME AND 85 MAJORS=4 DAYS REST
- **IMPORTANT: IF PITCHER GOES OVER 41 PITCHES, HE CANNOT CATCH. IF CATCHER CATCHES MORE THAN 4 INNINGS, HE CANNOT PITCH.**
- 8 WARM UP PITCHES IN 1<sup>ST</sup> INNING AND 5 FOR SUBSEQUENT INNINGS, THAT'S IT. HAVE A CATCHER READY BETWEEN INNINGS.
- ROLL BACK RULE: YOUR PITCHER CAN FINISH THE BATTER AND ROLL BACK TO LIMIT. FOR EXAMPLE, A PITCHER STARTS A BATTER WITH 33 PITCHES AND THROWS 6 PITCHES TO THAT BATTER BEFORE HE IS REPLACED. THE OFFICIAL PITCH COUNT RECORDED IS 35, NOT 39. CLEAR WITH OTHER MANGER BEFORE PITCHES ARE THROWN.





# SUNDAY LEAGUE PITCHING

## SIMPLE RULES TO FOLLOW

- **CHECK WITH YOUR IN-HOUSE COACHES TO SEE WHO IS NOT BURNED OUT PER THE PITCH COUNT RULES.**
- **LIMIT PITCHERS TO 1 INNING, OR UNDER 20 PITCHES, SO NO REST IS NEEDED. GET APPROVAL FROM NLL MGR IF YOU PLAN TO GO OVER AN INNING.**
- **SUNDAY TEAM IS FOR FUN AND YOU SHOULD HAVE PLENTY OF PITCHERS TO USE.**





# GAME REPORT PROCEDURE

**GET THEM IN ON TIME. IMPACTS STANDINGS AND GAME MANAGEMENT.**

## WHAT DO I FILL IN?

INCLUDE UMP NAMES. GET THEM BEFORE GAME STARTS.

FILL THE REPORT OUT DURING THE GAME AND CHECK WITH OTHER MANAGER EVERY HALF INNING.

INCLUDE GAME COORDINATORS (ONLY IF UMP IS UNDER 18)

PITCH COUNTS WITH PLAYER NUMBER.

SCORE ONLY UP TO OFFICIAL GAME. NOTHING AFTER SLAUGHTER RULE.

## NAMING CONVENTION

PLEASE SAVE THE REPORT USING THE FOLLOWING FORMAT: **MM-DD-TIME-FIELD-VISITOR-HOME.**

FOR EXAMPLE, THE NM1 AT RM3 GAME PLAYED AT 6:00 P.M. ON APRIL 11 AT KNOCH 5 WOULD BE:

**04-11-6P-KNOCH5-NM1-RM2.XLS.**

SEND IN XLS – NOT SCREEN SHOTS FROM A PHONE OR YOUR OWN FORMAT.

SEND THE REPORT THE SAME DAY AS THE GAME. AS QUICKLY AS YOU CAN AFER THE GAME.

IF DELAYED JUST SEND THE SCORE SO IT CAN BE POSTED

## WHERE TO SEND AND CHECK REPORTS?

MAJORS &  
SUPREME: [GAMEREPORTS@NLLB.ORG](mailto:GAMEREPORTS@NLLB.ORG)

GAME REPORTS WILL BE POSTED IN THE "DOCUMENTS" SECTION ON THE WEBSITE.

<b>Date</b>
4/8/17

Score	Inning										Final
	1	2	3	4	5	6	7	8	9		
V CLS1-ILLINOIS CEMENT	2	0	4	0	0	1					7
H NLS3-FREY ORTHODONTICS	1	0	4	0	0	0					5

<b>Next Game</b>
04/12/17
04/12/17

**CLS1-ILLINOIS CEMENT**

##	Pitcher	Age	Pitches									Total	Days Rest
6		10	22	15	11							48	2
9		9			15	16						31	1
11		10					22					22	1
12								12				12	0
												0	0
												0	0
												0	0
												0	0
												0	0
												0	0
	<b>Total</b>		22	15	26	16	22	12	0	0	0	113	

<b>Next Available</b>
4/11/17
4/10/17
4/10/17
4/9/17
4/9/17
4/9/17
4/9/17
4/9/17

**NLS3-FREY ORTHODONTICS**

##	Pitcher	Age	Pitches									Total	Days Rest
22		10	19	22								41	2
15		10			40	15						55	3
16		9					16	17				33	1
												0	0
												0	0
												0	0
												0	0
												0	0
	<b>Total</b>		19	22	40	15	16	17	0	0	0	129	

<b>Next Available</b>
4/11/17
4/12/17
4/10/17
4/9/17
4/9/17
4/9/17
4/9/17
4/9/17

<b>ALL INFORMATION CRITICAL TO UMPIRE PAY AND LEGALIZATION OF GAME!</b>	
<b>Umpire name</b>	JACK NOAH
<b>Umpire name (if a second umpire)</b>	MIKE ZAGORSKI
<b>Game coordinator (if applicable)</b>	N/A - JACK 18 YO

# PRACTICES

**YOU DO NOT NEED A BASEBALL DIAMOND TO HAVE A GOOD PRACTICE.**

## HOW OFTEN CAN I PRACTICE

- AS MUCH AS YOU WANT, BUT WE CLEAR THE SCHEDULE EVERY WEEK. YOU CAN'T LOCK UP A FIELD FOR THE SEASON OR WEEKS AT A TIME.
- LET'S USE THESE TIMES TO MAX THE USE FOR EVERYONE:

**4:00-5:30**

**5:30-7:00**

**7:00-8:30**

## WHAT FIELDS CAN YOU RESERVE?

**CONTINENTAL:** COLUMBIA EAST & WEST, WINDING CREEK NORTH & SOUTH, PRAIRIE EAST (BACK FIELD) AND RANCHVIEW.

**REPUBLIC:** ASHBURY EAST & WEST, KNOCH 3 & 4, GREGORY AND CANTORE.

**NATIONAL:** NIKE 1 & 3, PRAIRIE WEST (FRONT FIELD), PEMBROKE, ARROWHEAD AND MILL STREET.

NONE OF THESE FIELDS ARE OPEN FOR PRACTICE: KNOCH 5, BEACH AND DUPAGE 5.

## HOW TO RESERVE

WALK THEM THROUGH THE WEBSITE.

# 2018 PLAYOFFS

- 19 GAME SCHEDULE WITH EVERYONE MAKING FIRST ROUND OF PLAYOFFS FOR 20<sup>TH</sup> GAME ON JUNE 12<sup>TH</sup>.
- TEAMS WILL BE SEATED WITH 3 DIVISION WINNERS BEING TOP SEATS.
- TOP 2 MAJORS TEAMS GET A BYE IN THE FIRST ROUND.
- TOP 4 SUPREME TEAMS GET A BYE IN THE FIRST ROUND.
- IF THERE ARE TIES, WE USE THE FOLLOWING TO DECIDE:

HEAD TO HEAD

RUNS ALLOWED BETWEEN THE TIED TEAMS

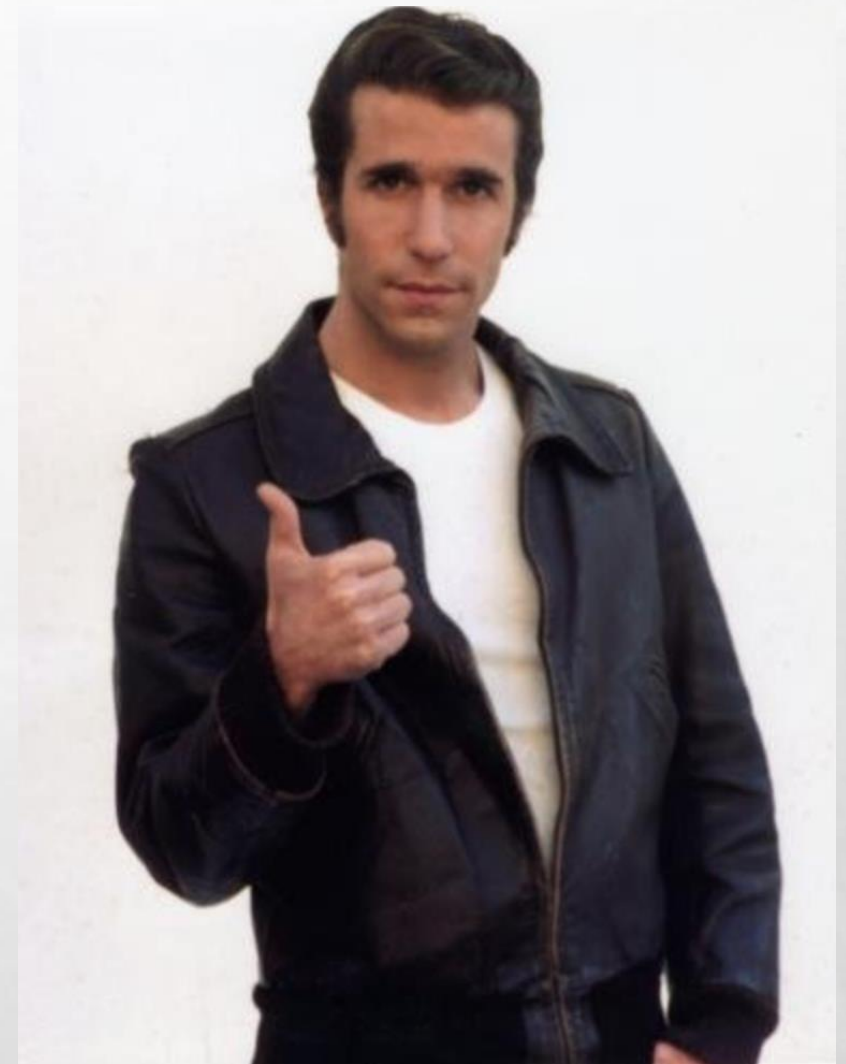
RUNS ALLOWED FOR THE SEASON

COIN FLIP

# UMPIRES

## HOW TO HANDLE THEM?

- BE COOL.
- DON'T MISS FEBRUARY 24<sup>TH</sup> MEETING. 8:30-12:30 PM.
- WE HAVE GOOD UMPS, BUT THEY WILL MISS CALLS JUST LIKE THE PROS DO. DEAL WITH IT. TEACH YOUR KIDS LIFE IS UNFAIR AND THE BETTER PLAYERS ARE MENTALLY TOUGH AND MOVE ON. THEY WILL WATCH HOW YOU REACT AND MIMIC YOU.
- ZERO TOLERANCE IN 2018 FOR UMPIRE ABUSE. WE MEAN ZERO!
- SUBMIT YOUR UMPIRE REVIEW FORMS SO WE CAN GET THEM BETTER.





# REMEMBER WHAT'S IMPORTANT

- I'M ALL FOR A STRICT AND STRUCTURED ENVIRONMENT, BUT KEEP IT FUN.
- YOU HAVE A HUGE IMPACT ON THESE KIDS. AS MUCH OR MORE THAN ANY TEACHER.
- THE KIDS MOVE ON 5 MINUTES AFTER THE GAME REGARDLESS OF THE SCORE, BUT THEY WILL NEVER FORGET A COACH WHO HUMILIATES THEM.