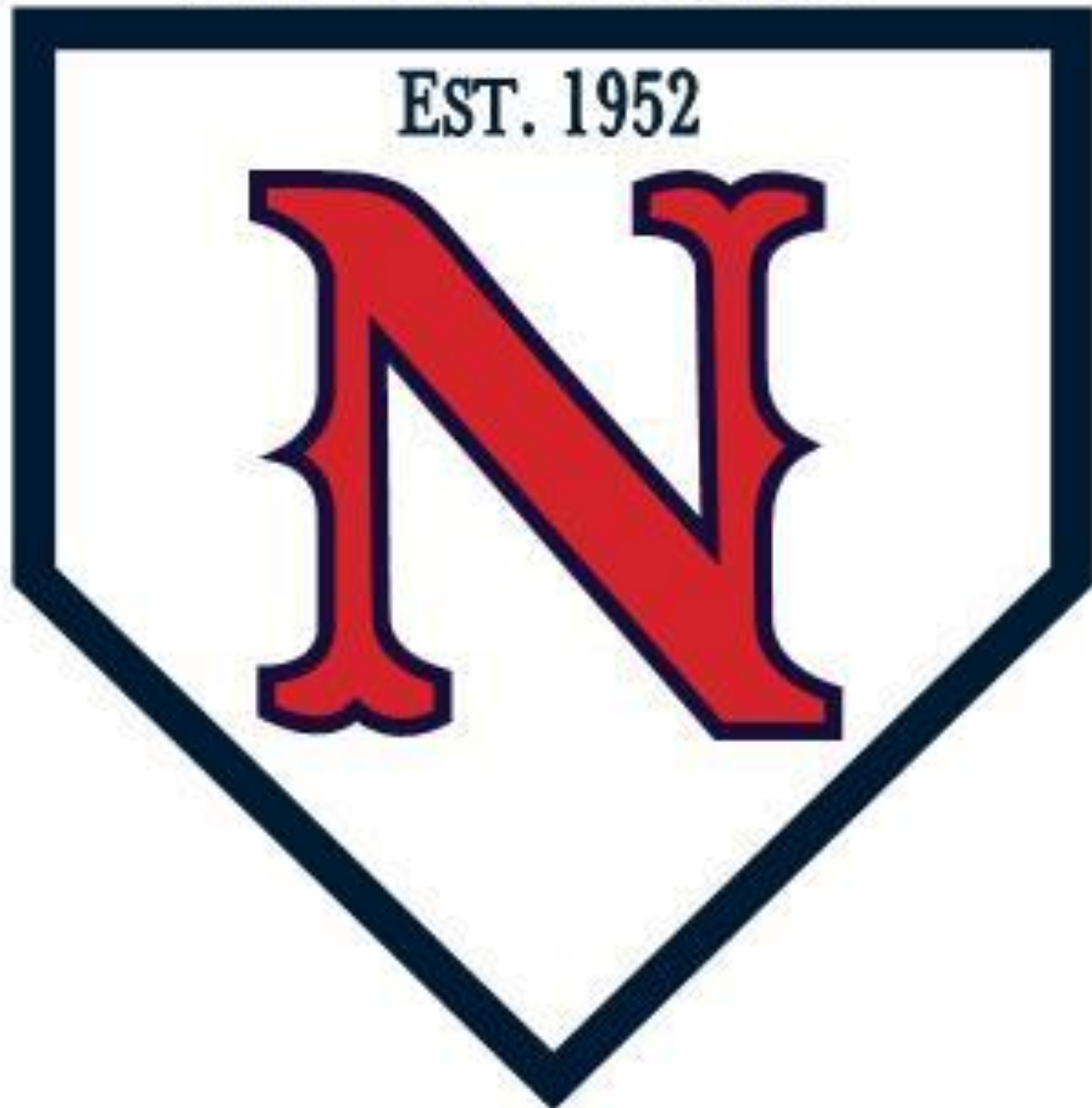


NAPERVILLE
LITTLE LEAGUE



2023 Majors A and
Supreme A
Manager Meeting

NAPERVILLE LITTLE LEAGUE



Mission Statement

Naperville Little League is a program that uses the game of baseball to teach our youth to be the future leaders of our community. Our goal is to develop our youth to have a love and understanding of the game while at the same time, instilling in them character traits such as courage, sportsmanship, teamwork, and a sense of community.

2023 NLLB Board of Directors

Contact information is on the website or click [here](#) to access contact information.

President: Mike Llewellyn

Continental League Director: Jeff Calihan

National League Director: Tim Pfleeger

Republic League Director: Neil Wisker

Junior League Director: Scott Hurley

Director of Operations: Lisa O'Rear



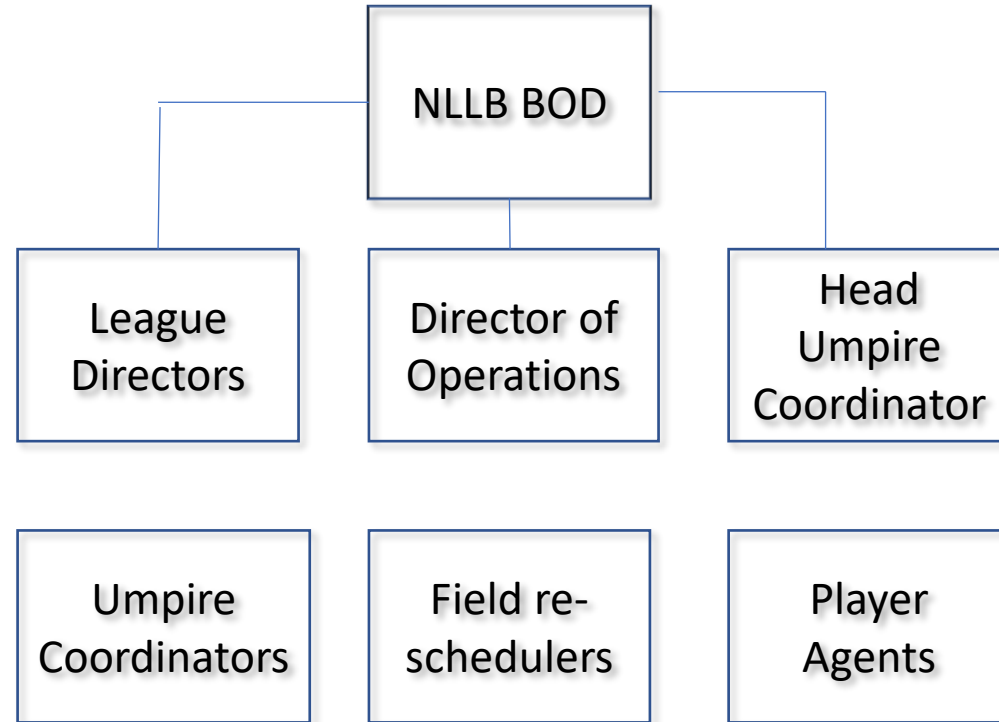


2023 Managers

YOU are the face of the league

- 20 Supreme A Managers
- 16 Majors A Managers
- Thank you for all you do. We are here to help and get you what you need to be successful.
- MIGS. Are you on the list? Are your assistants on the list?
- Anyone volunteering in any capacity must register as a volunteer and submit to a YEARLY background check. Why do we do this?
- Information is on the website: Coaches & Volunteers/Register to be a Coach or Volunteer. Or, Click [here](#) to become a 2023 MIGS.

Structure of Naperville Little League



Continental League Director: Jeff Calihan, jcalihan@nllb.org

National League Director: Tim Pfleeger, tpfleeger@nllb.org

Republic League Director: Neil Wisker, nwisker@nllb.org

Junior League Director: Scott Hurley, shurley@nllb.org

Director of Operations: Lisa O'Rear, lorear@nllb.org

Head Umpire Coordinator: Ginny McCormack, gmccormack@nllb.org



Game Cancellations

- If cancelled by NPD or NLLB, an e-mail blast from system will notify everyone and your game will be rescheduled. No other action is required on your part unless you want to follow up with your team to make sure they received the message.
- If **NOT** cancelled by NPD or NLLB, go to the game in uniform or you will risk a forfeit.
 - Review NPD Field Maintenance guide
 - If you and the other manager cancel due to field conditions, call your Umpire Coordinator and Field Re-scheduler. Click [here](#) to locate contact information.
 - Do NOT leave an umpire at the field
- Your game will be rescheduled to the next available day/time teams and field are available. NO EXCEPTIONS.
- If weather becomes an issue you will have 3-4 games per week, sometimes 3 games in a row and more 8pm games than originally scheduled.
- Information on Game Cancellation procedures, Field Re-schedulers contact information and Umpire Coordinator contact information can be found on the website: Coaches & Volunteers/Coaches Resources or, click [here](#).



Player Agents

- Player Agents handle call-ups when you are short players.
 - Junior A pulls from Majors AA and Majors A
 - Majors AA pulls from Majors A or Supreme AA (LLA 10 year old)
 - Majors A pulls from Supreme A/AA (LLA 10 year old)
 - Supreme AA pulls from Supreme A
 - Supreme A pulls from Rookies AA
- Rules for call-ups
 - They wear their own uniform
 - They must bat last
 - They cannot pitch or catch
 - They cannot play more defensive innings than a regular player
 - They cannot skip their regular team's game for a call-up
- Player Agents contact information can be found on the website: Coaches & Volunteers/Coaches Resources or, click [here](#).

Adult Game Coordinators

- Must have when umpire is under 18
- Must be a MIGS
- Home team provides Adult Game Coordinator
- Must be introduced to the umpire before the game
- Assists umpire with tough decisions if needed
- Information on responsibilities of Adult Game Coordinator can be found on the website: Coaches & Volunteers/Coaches Resources or, click [here](#).





Game Day Procedures

- No more than 3 coaches in the dugout
- Home team occupies 3B dugout
- Visiting team preps the field, home team breaks it down (Repair mound and batter's box)
- Lights are set to turn off at 8:15pm and 10:15pm (Knoch 3)
- CLEAN UP AFTER YOURSELVES; dugout, stands, storage room
- Pull bases and insert base plugs
- Repair the mound and batter's box after games



Field Maintenance

- NPD owns them, we rent them. The better job we do taking care of them, the more willing NPD will be to rent to us.
- No more than 4 bags of turface should be used on a field at one time. If you have to use that much, then do not play/practice on the field.
- Repair the mound and batters box after games and practices
- If chalk/turface is low, e-mail Lisa to let her know, she is our contact with NPD. Please do not call NPD directly
- If need turface/chalk that day, visit another major field to retrieve, but don't leave that location without any supplies.
- Dirt and grass stay separated
- NPD is installing cameras to prevent theft
- Information on Field Maintenance can be found on the website: Coaches & Volunteers/Coaches Resources or, click [here](#).



Miscellaneous

- Do not risk injuries; take a player out of the lineup if they get hurt. You can inset them back in the lineup later if feeling better. They will be skipped in the lineup and will NOT be an out. Safety information can be found on our website or click [here](#).
- Lightning: There are lightning detectors at major fields, once they sound, everyone goes to their car and waits for the all clear sound. Don't risk it; if you see lightning, take cover immediately
- No peanuts in the dugout
- No warmups with bat during the game (no donuts, no on-deck circle)
- Male catchers must wear cups and throat guards
- All bats must have USA baseball sticker, please check before the game.
 - 1st offense: dead ball, batter out, team loses a base coach
 - 2nd offense: dead ball, batter out, manager ejected

Little League International Rules and Local Rules

- LLI Rulebook governs all games. Local rules are NLLB changes or clarifications only.
- Local rules can be found on the website: Coaches & Volunteers/Coaches Resources or, click [here](#).
- Some notable rules to note:
 - Three (3) mound visits per inning and third one you must pull the pitcher. Four (4) mound visits max to a pitcher during the game.
- Pitch counts. Get someone to handle on your team and check with the other coach every half inning.
 - Full day rest = full day of rest
 - 20 pitches or less = 0 days rest
 - 21-35 pitches = 1 day rest
 - 36-50 pitches = 2 day rest
 - 51-65 pitches = 3 day rest
 - 66-75 pitches (max) for supreme a and 85 pitches (max) for majors a = 4 day rest
 - If a pitcher throws 41 or more pitches, he cannot catch. If catcher catches 4 or more innings, he cannot pitch.
 - 8 warm up pitches in 1st inning and 5 for subsequent innings
 - Roll back rule: your pitcher can finish the batter and roll back to limit. For example, a pitcher starts a batter with 33 pitches and throws 6 pitches to that batter before he is replaced. The official pitch count recorded is 35, not 39.

Game Changer Procedure



- All NLLB teams will be using Game Changer this year
- NLLB created your team; invites were sent
- Input your rosters
- Use the new version of the app (see logo to the left)
- Score only up to official game, nothing after slaughter rule
- Schedule has been added. If reschedule, you need to update
- “Last batter First Pitch #” to help with role back rule
- If intentional walk, issue 4 balls, not “intentional walk”
- Both teams can score the game. First team to log in will be official score that is added to GC standings
- Home team is responsible for scoring the game. If neither team scores the home team will forfeit.
- Game Report Coordinator will take GC scores and populate scores in League Athletics
- Game Changer notes can be found on the website: Coaches & Volunteers/Coaches Resources or, click [here](#).



Baseball Practices

- Schedule on website, NPD programs may block or bump. Weather make-up games will bump practices
- Schedule is cleared every week as to not lock up field for the season.
- NONE OF THESE FIELDS ARE OPEN FOR PRACTICE: BEACH, NIKE, KNOCH 5, DUPAGE 5 (AA Teams will be allowed to select these fields, opening up more time on Majors A/Supreme A game fields)
- Procedures on how to schedule a practice through the system can be found on the website: Coaches & Volunteers/Coaches Resources or, click [here](#).

Sponsors



Please be sure to reach out to your sponsors. Lisa will e-mail you their contact information.

Without their support, we could not keep our costs down



Umpires

- Our umpires are going to miss calls, just like the pros; accept it and move on
- ZERO tolerance for umpire abuse
- OK to ask umpire about calls before game, between innings
- Submit your umpire evaluation forms so our Chief Umpire and Umpire Coordinators can work with the kids
- Umpire evaluation forms can be found on the website: Coaches & Volunteers/Coaches Resources or, click [here](#).



Coaching Resources

ALL THE INFORMATION YOU WILL NEED FOR THE SEASON CAN BE FOUND ON THE WEBSITE: COACHES & VOLUNTEERS/COACHES RESOURCES OR CLICK [here](#).

Miscellaneous

- Playoff structure to be finalized across the leagues (SA play themselves; MA National League play themselves and Continental League is combined with Republic League) according to winning percentage. Tie breaker will be as follows:
 1. Head to Head
 2. Runs Allowed for the Season
 3. Coin Flip
- No professional team photos this year. We will give sponsors non-photo plaques (you will distribute to your sponsor).

REMEMBER WHAT'S IMPORTANT



Structure your practice, but keep it fun



You have a HUGE impact on these kids



The kids move on 5 minutes after the game regardless of the score, but they will never forget a coach who humiliates them



Remember, people will not remember what you said to them, but they always remember how you make them feel